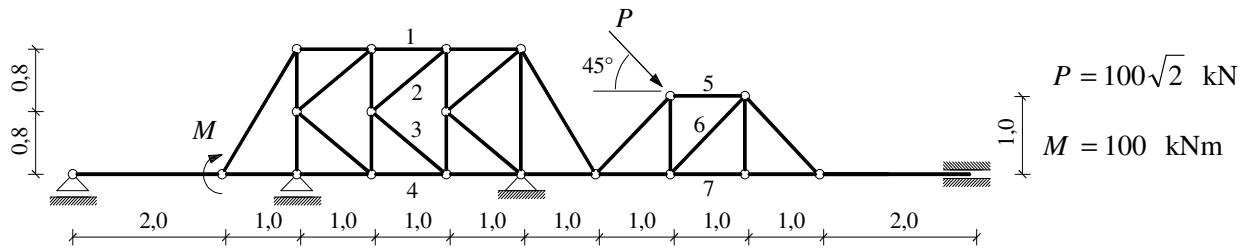
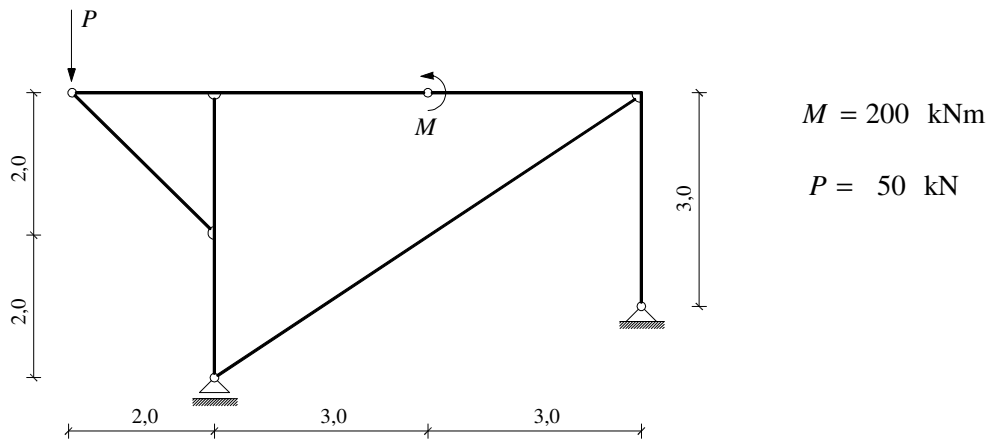


GS 1. – 1. kolokvij (A) (2006./2007.)

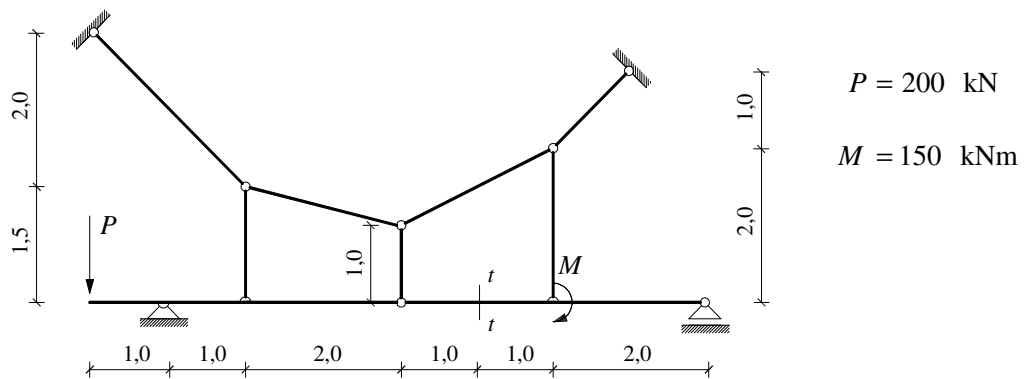
1. (30) Analitičkim postupkom odredite sile u štapovima 1 – 7.



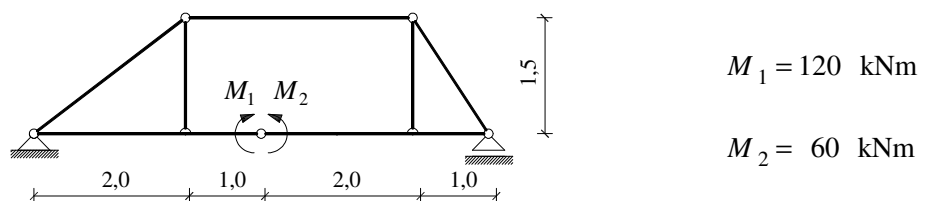
2. (20) Primjenom principa superpozicije nacrtajte M dijagram.



3. (25) Grafičkim postupkom odredite sile u presjeku $t-t$.

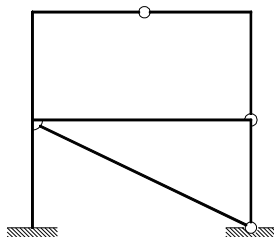


4. (25) Nacrtajte M , T i N dijagrame.

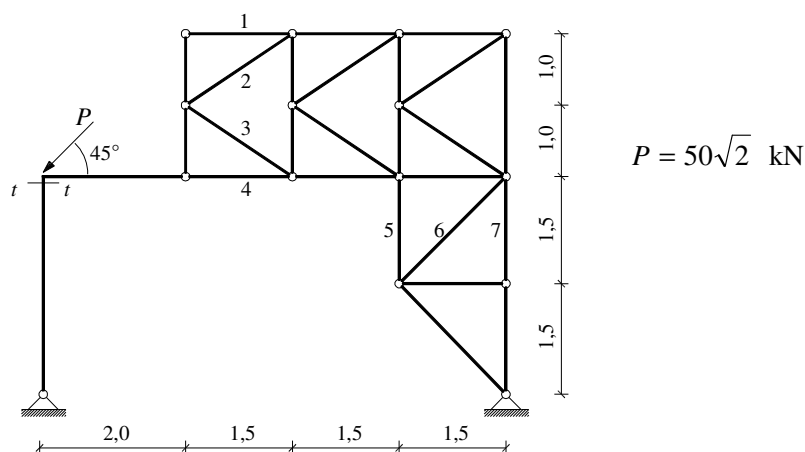


GS 1. – 1. kolokvij (B) (2006./2007.)

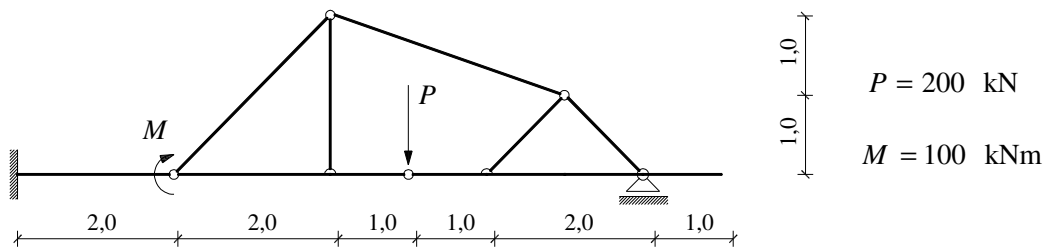
1. (15) Oslobađanjem odgovarajućeg broja unutarnjih i/ili vanjskih veza zadani nosač pretvorite u statički određeni.



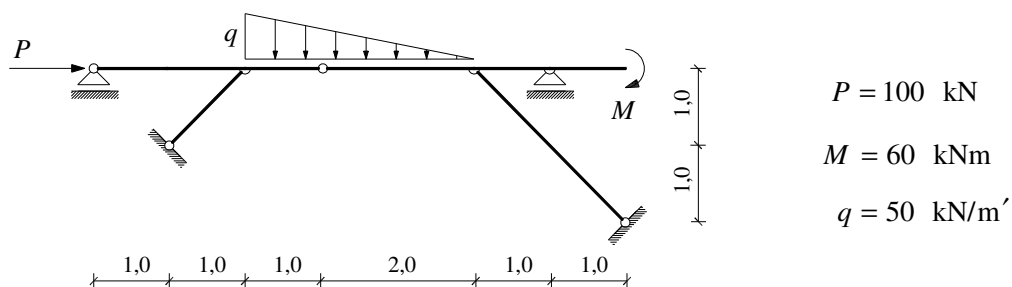
2. (25) Grafičkim postupkom odredite sile u štapovima 1 – 7, te sile u presjeku $t-t$.



3. (30) Primjenom principa superpozicije nacrtajte M dijagram.

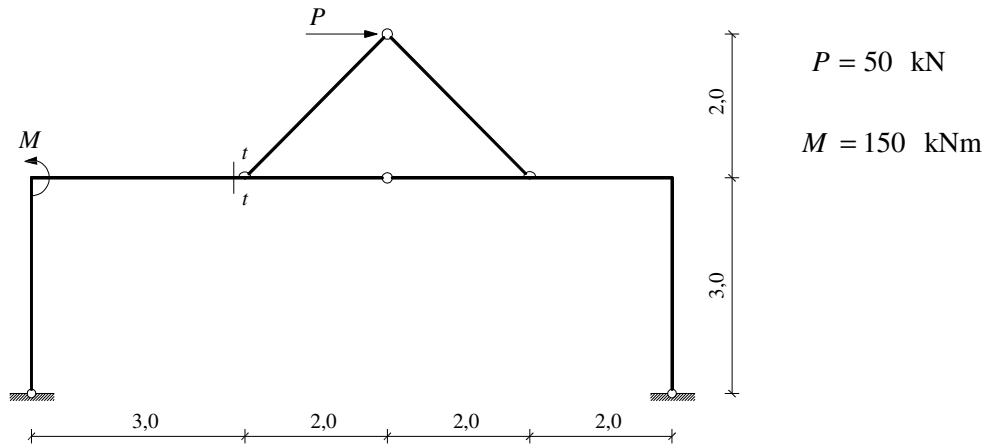


4. (30) Analitičkim postupkom odredite M , T i N dijagrame.

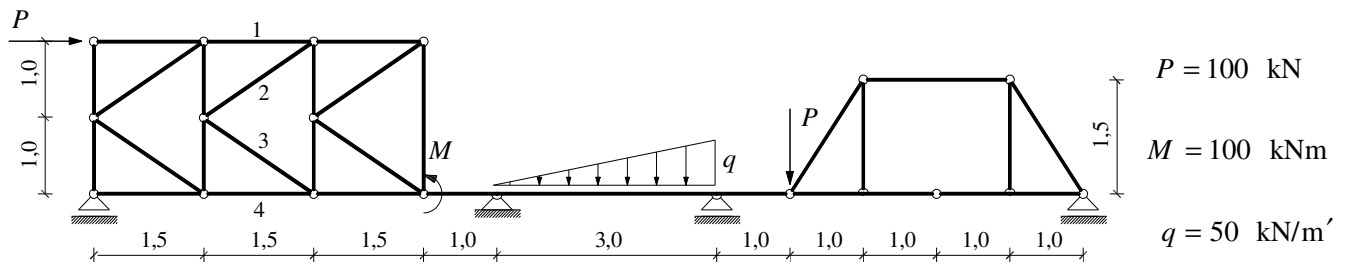


GS 1. – 1. kolokvij (C) (2006./2007.)

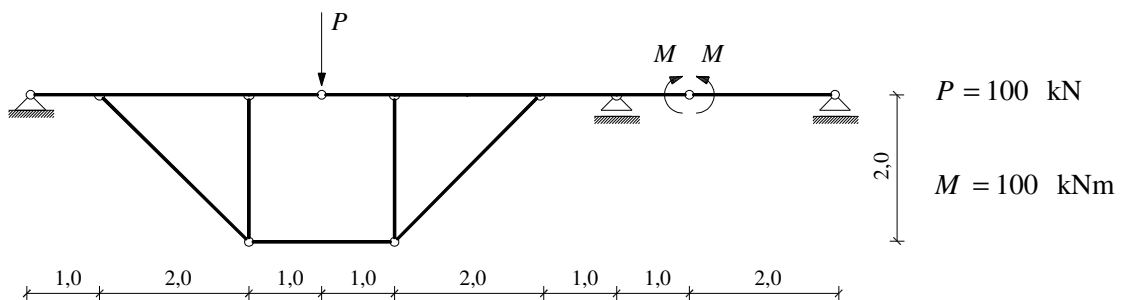
1. (25) Grafičkim postupkom odredite sile u presjeku $t-t$.



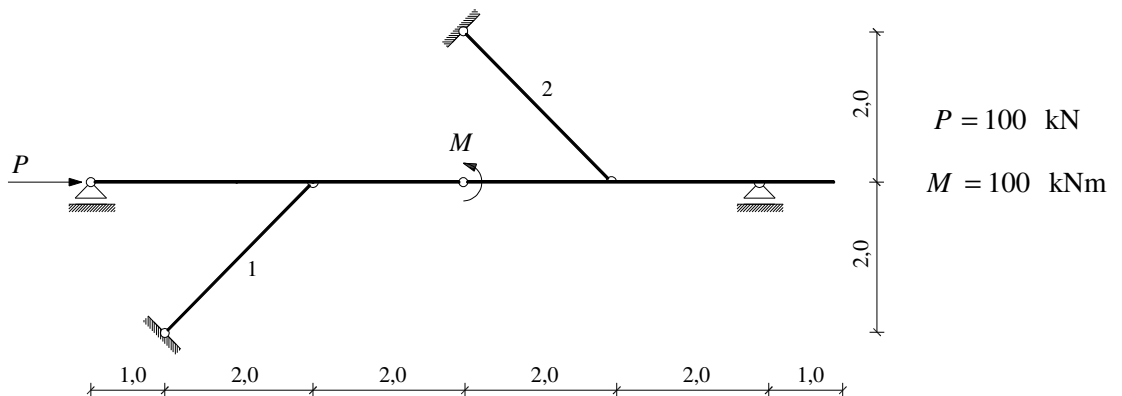
2. (25) Analitičkim postupkom odredite M i T dijagrame, te sile u štapovima 1 – 4.



3. (30) Primjenom principa superpozicije nacrtajte M dijagram.

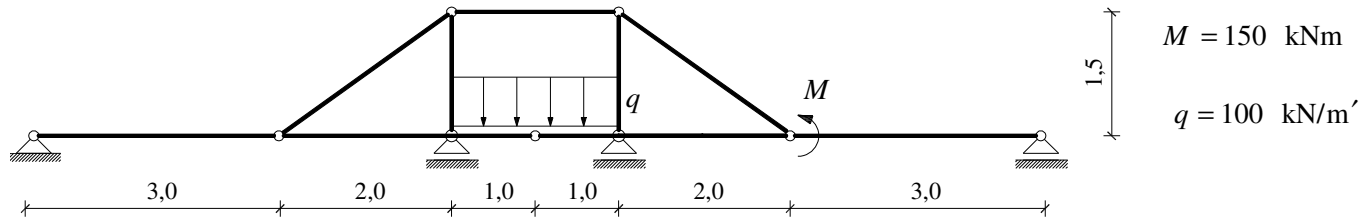


4. (20) Odredite sile u štapovima 1 i 2.

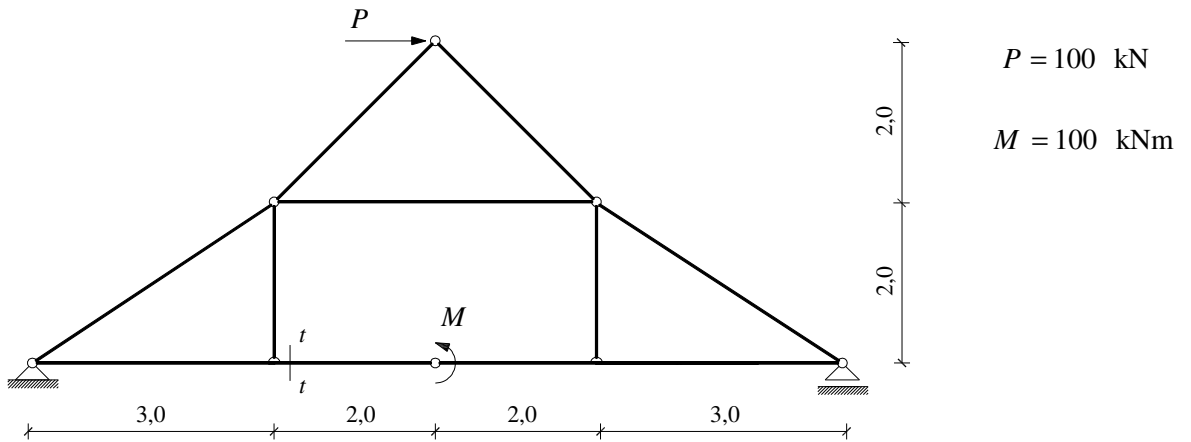


GS 1. – 1. kolokvij (D) (2006./2007.)

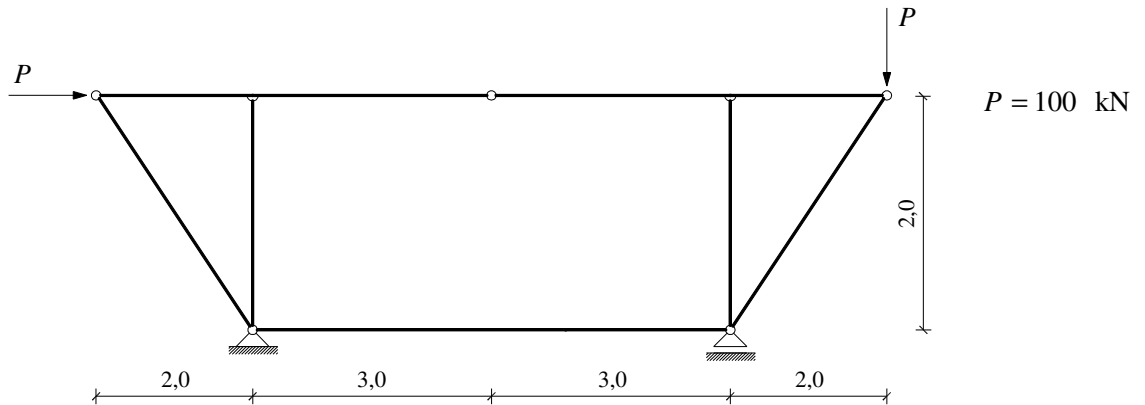
1. (25) Analitičkim postupkom odredite M , T i N dijagrame.



2. (25) Grafičkim postupkom odredite sile u presjeku $t - t$.



3. (20) Odredite sile u zategama.



4. (30) Primjenom principa superpozicije nacrtajte M dijagram.

