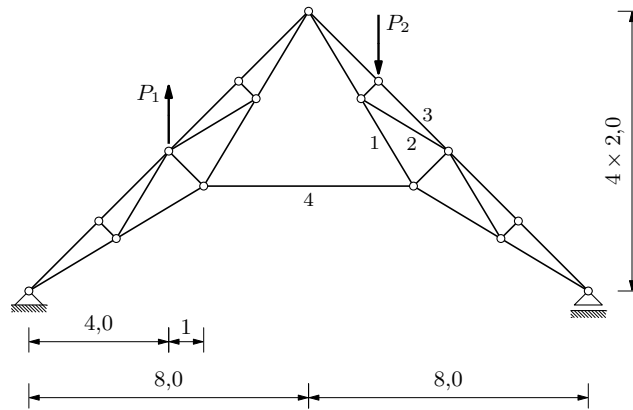
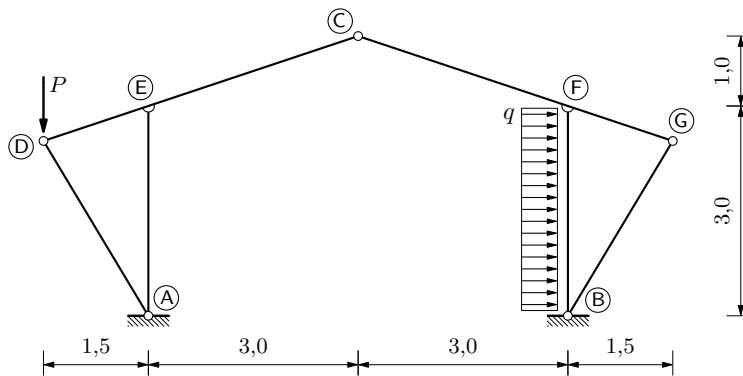


GS 1. — 10. srpnja 2007.

1. Grafičkim postupkom nađite sile u štapovima 1, 2, 3 i 4 ako su $P_1 = P_2 = 100$ kN.



2. Nacrtajte M , T i N dijagrame ako su $P = 125$ kN i $q = 50$ kN/m'.



3. Izračunajte M_A . Neka su: $P = 100\sqrt{2}$ kN, $\text{tg } \alpha = 1$ i $EI = 20\,000$ kNm².

