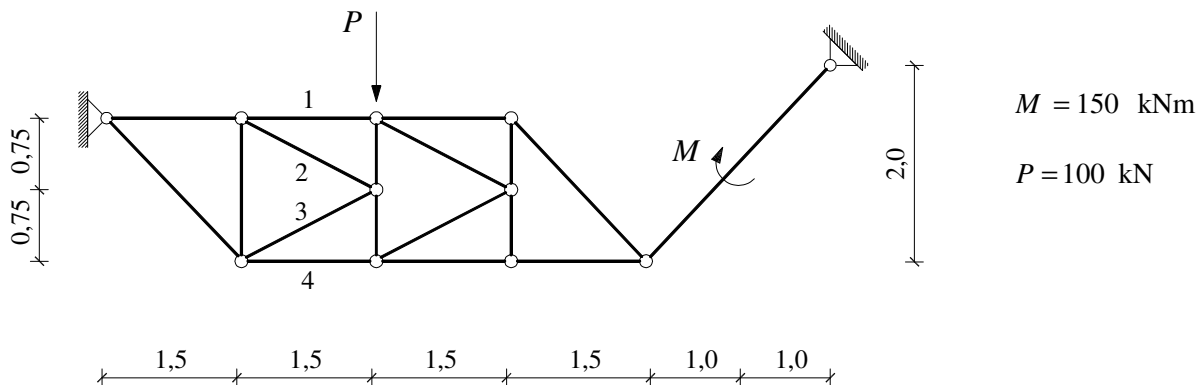
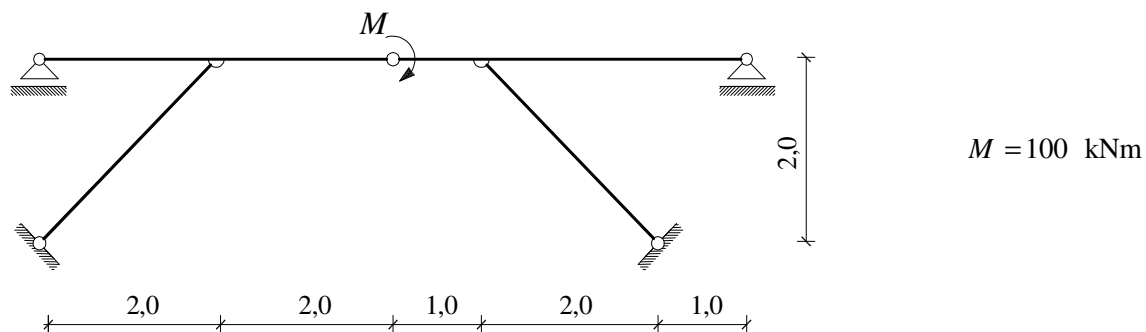


GS 1. – 07.02.2008.

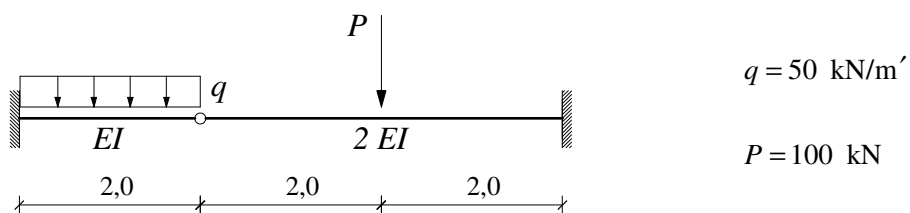
1. a) Nacrtajte M dijagram.
 b) Grafičkim postupkom odredite sile u štapovima 1 – 4.



2. Primjenom principa superpozicije nacrtajte M dijagram.



3. Primjenom metode sila nacrtajte M i T dijagrame.



4. a) Primjenom metode sila nacrtajte M dijagram.
 b) Nacrtajte progibnu liniju nosača.

