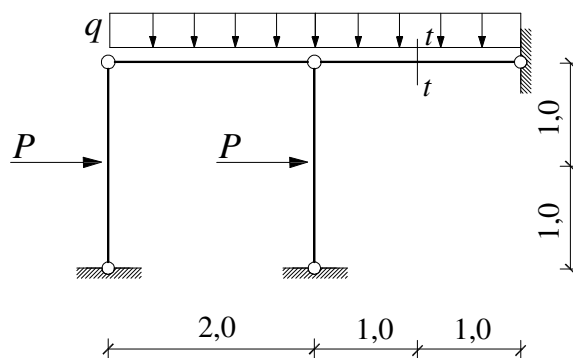


GS 1. – 08.07.2008.

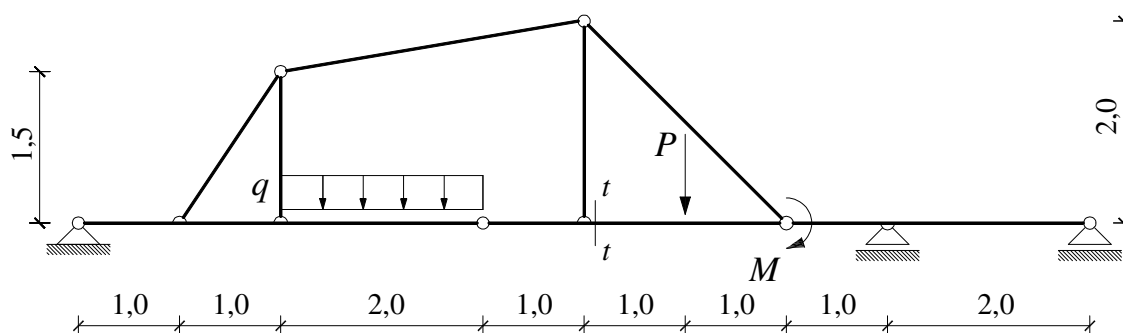
1. a) Grafičkim postupkom odredite sile u poprečnom presjeku $t - t$.
 b) Nacrtajte M dijagram.



$$P = 100 \text{ kNm}$$

$$q = 40 \text{ kN/m'}$$

2. Primjenom principa superpozicije nacrtajte M dijagram.

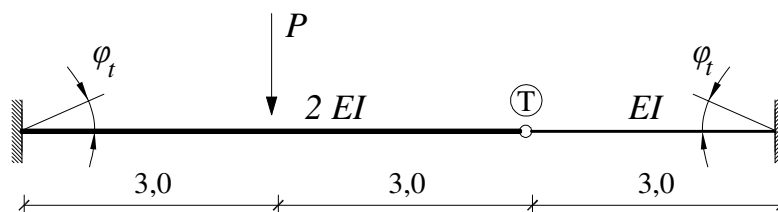


$$M = 100 \text{ kNm}$$

$$P = 150 \text{ kN}$$

$$q = 40 \text{ kN/m'}$$

3. Izračunajte vertikalni pomak točke T.



$$P = 150 \text{ kN}$$

$$EI = 20\,000 \text{ kNm}^2$$

$$\varphi_t = 0,006$$

4. Odredite stupanj statičke neodređenosti.

