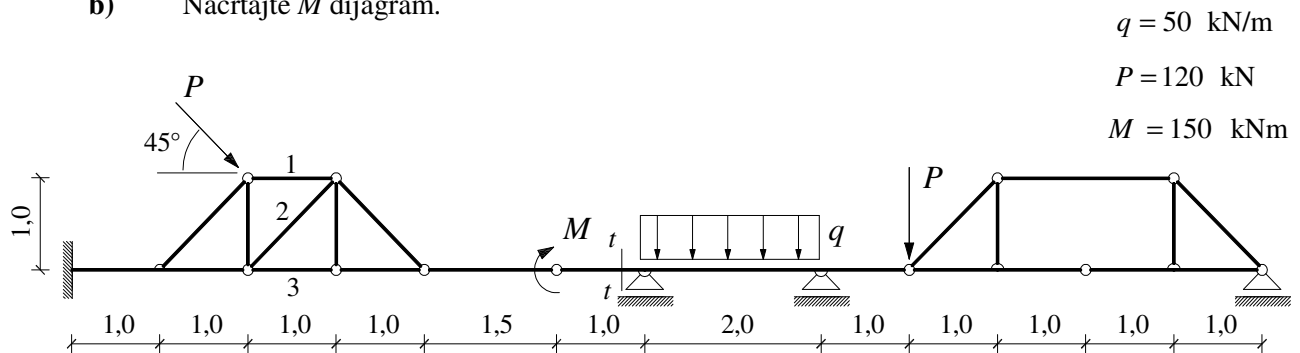
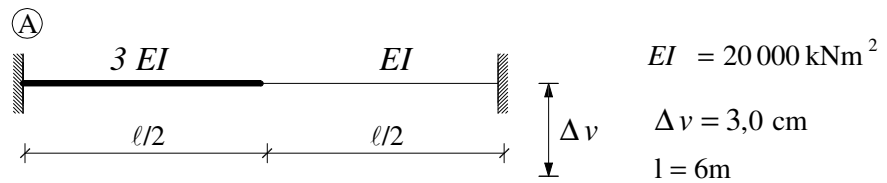


## GS 1. – 01.09.2009.

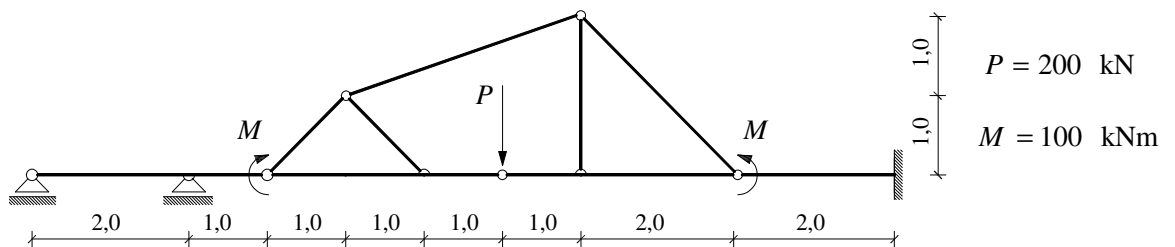
1. a) Grafičkim postupkom odredite sile u presjeku  $t-t$  i u štapovima 1-3.  
 b) Nacrtajte  $M$  dijagram.



2. Izračunajte kut zaokreta osi nosača u polovini raspona.



3. Primjenom principa superpozicije nacrtajte  $M$  dijagram.



4. Primjenom metode sila nacrtajte  $M$  i  $T$  dijagrame.

