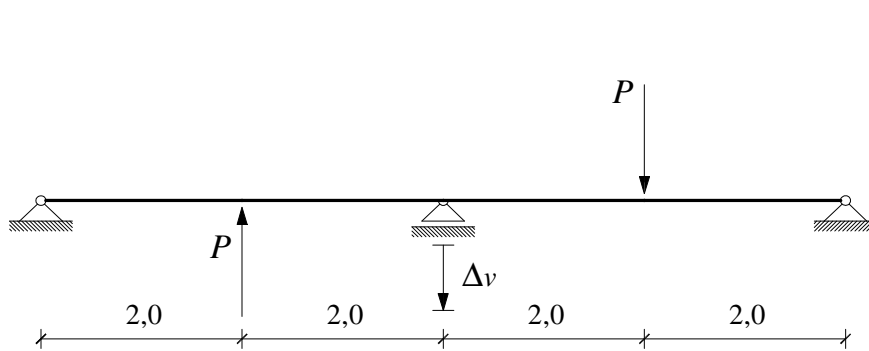
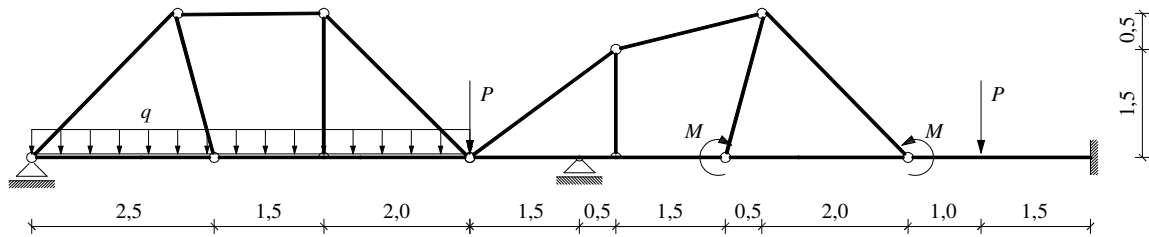


## GS 1. – 03.02.2009.

1. Koristeći simetriju i antimetriju odredite momentni dijagram metodom sila.



2. Primjenom superpozicije nacrtajte  $M$ -dijagram.



3. Odredite vrijednost koeficijenta  $\alpha$ , tako da je progib točke B nula ( $w_B=0$ ).  
 $EI = const.$

