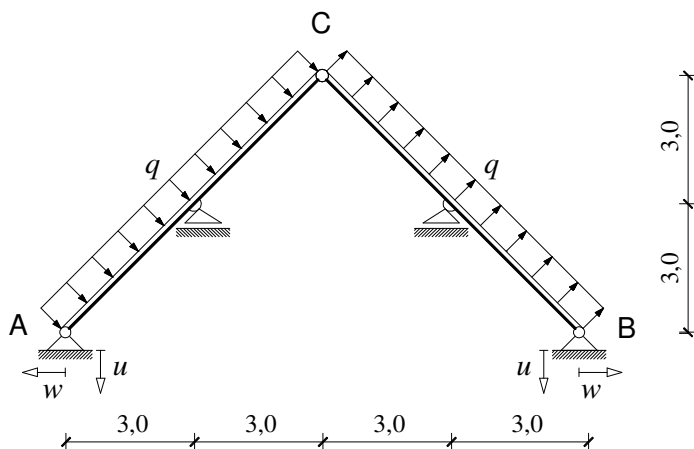


## GS 1. – 03.07.2012.

1. a) Nacrtajte  $M$  dijagram (zanemarite utjecaj uzdužnih sila).  
 b) Odredite vertikalni pomak točke C



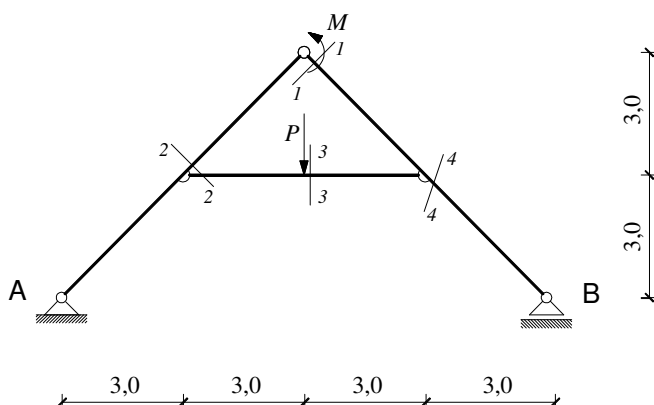
$$q = 2,0 \text{ kN/m}$$

$$u = w = 1 \text{ cm}$$

$$E = 3,0 \times 10^7 \text{ kN/m}^2$$

$$b/h = 30/40 \text{ cm}$$

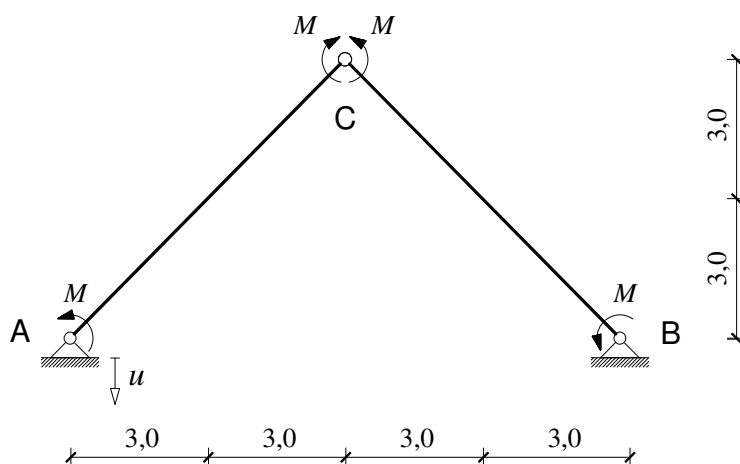
2. a) Grafičkim postupkom odredite sile u presjecima



$$M = 100 \text{ kNm}$$

$$P = 10 \text{ kN}$$

3. a) Superpozicijskim postupkom nactajte dijagram momenata savijanja  
 b) Odredite vertikalni pomak točke C



$$M = 100 \text{ kNm}$$

$$u = 1 \text{ cm}$$