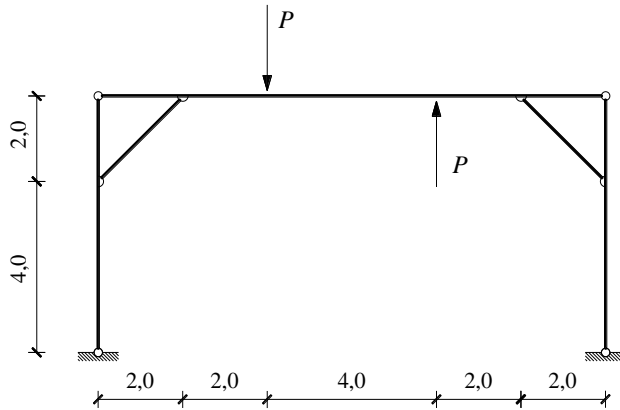


GS 1. – 05.02.2013.

1. Nacrtajte dijagrame unutarnjih sila.

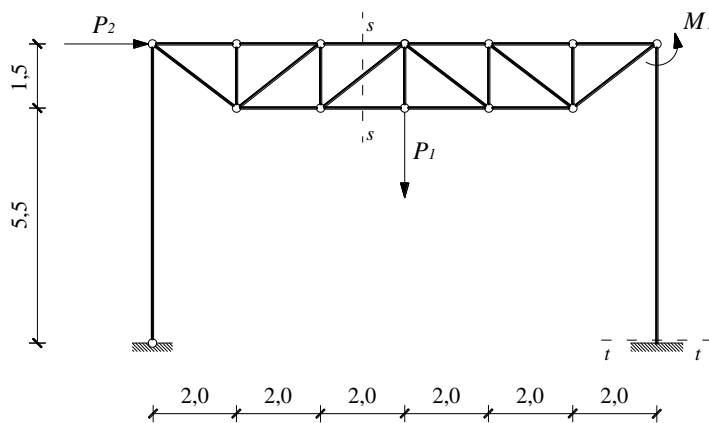


$$P = 100,0 \text{ kN}$$

$$E = 3.0 \times 10^7 \text{ kN/m}^2$$

$$b/h = 50/50 \text{ cm}$$

2. Grafičkim postupkom odredite sile u presjecima $s-s$ i $t-t$.

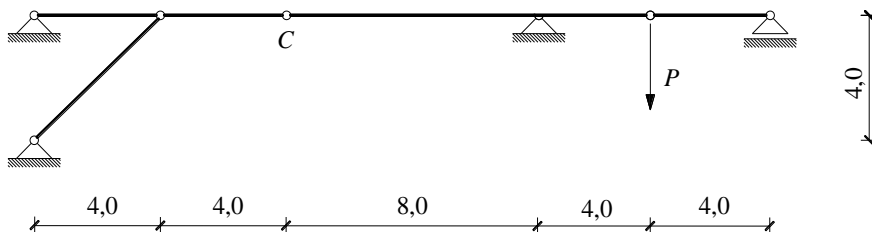


$$P_1 = 200 \text{ kN}$$

$$P_2 = 100 \text{ kN}$$

$$M_1 = 200 \text{ kN}$$

3. Može li se izračunati progib točke C? Ako može izračunajte ga! Ako ne može, zašto ne?



$$P = 200,0 \text{ kN}$$

$$E = 3.1 \times 10^7 \text{ kN/m}^2$$

$$b/h = 30/50 \text{ cm}$$