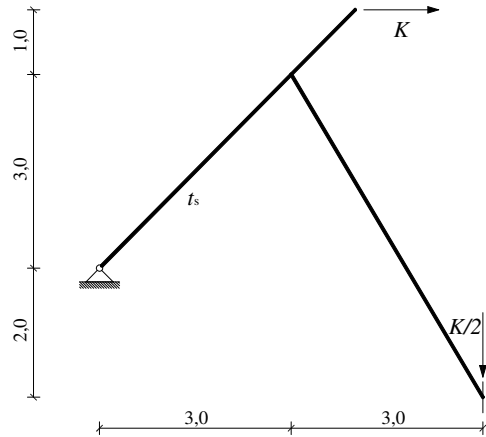


GS 1. – 10.02.2009.

1. Koristeći metodu sila odredite momentni dijagram.



$$K = 100 \text{ kN}$$

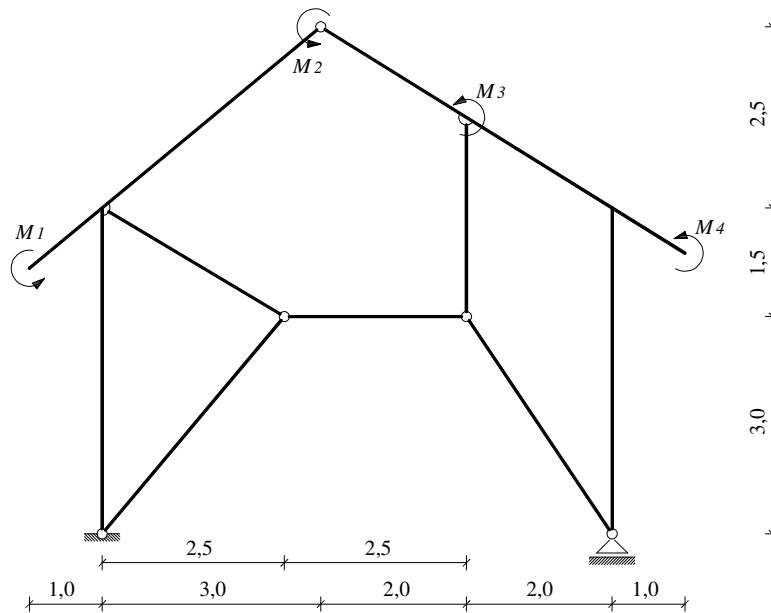
$$t_s = 15^\circ \text{ C}$$

$$E = 3 \cdot 10^7 \text{ kN/m}^2$$

$$\frac{b}{h} = \frac{35}{45} \text{ cm}$$

$$\alpha_t = 10^{-5} \text{ K}^{-1}$$

2. Primjenom superpozicije nacrtajte M -dijagram.



$$M_1 = 200 \text{ kNm}$$

$$M_2 = 380 \text{ kNm}$$

$$M_3 = 260 \text{ kNm}$$

$$M_4 = 222 \text{ kNm}$$

3. Grafičkim postupkom odredite sile u štapovima 1 – 3.

$$P_1 = 124 \text{ kN}$$

$$P_2 = 205 \text{ kN}$$

$$P_3 = 105 \text{ kN}$$

