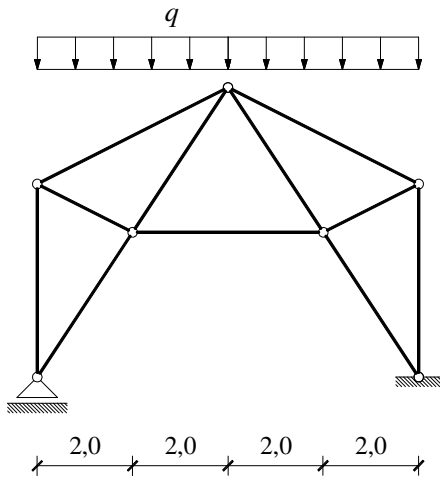


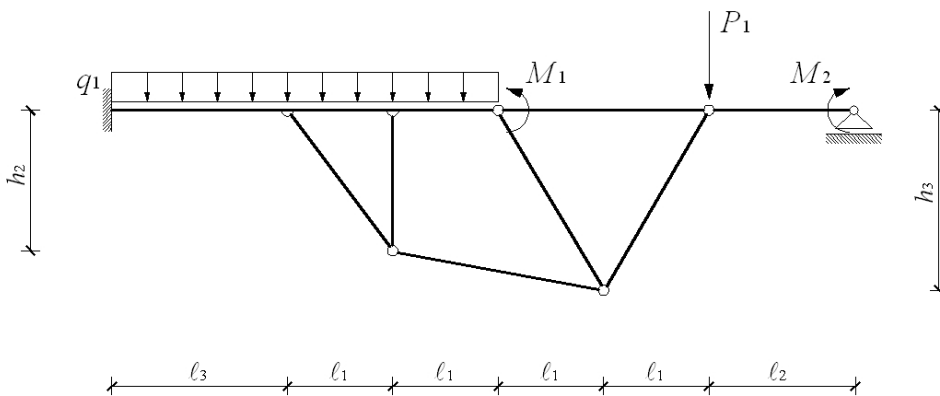
# GS 1. – 11.09.2012.

1. Nacrtajte dijagrame unutarnjih sila.



$$q = 10,0 \text{ kN/m}$$

2. Superpozicijskim postupkom nacrtajte dijagram momenata savijanja.



$$P_1 = 100 \text{ kN}$$

$$q_1 = 10,0 \text{ kN/m}$$

$$M_1 = 100 \text{ kN}$$

$$M_2 = 300 \text{ kN}$$

$$l_1 = 1,0 \text{ m}$$

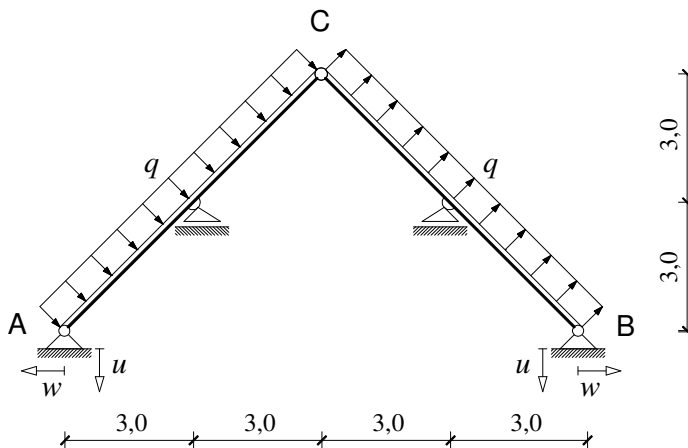
$$l_2 = 2,0 \text{ m}$$

$$l_3 = 2,5 \text{ m}$$

$$h_2 = 2,0 \text{ m}$$

$$h_3 = 3,0 \text{ m}$$

3. a) Nacrtajte dijagram momenata savijanja.  
b) Odredite vertikalni pomak točke C.



$$u = w = 1,0 \text{ cm}$$

$$q = 2,0 \text{ kN/m}$$

$$E = 3,0 \times 10^7 \text{ kN/m}^2$$

$$b/h = 30/40 \text{ cm}$$