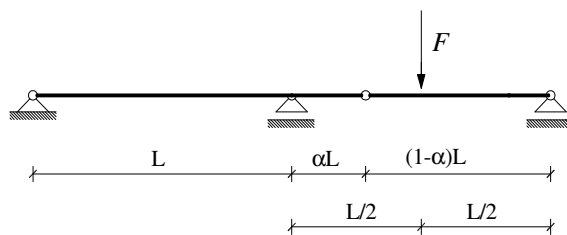
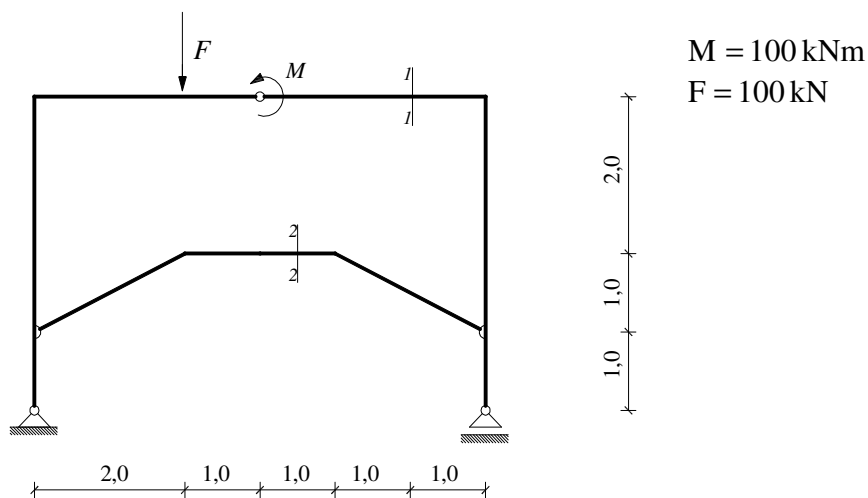


## GS 1. - 1. kolokvij (A) – (2011./2012.)

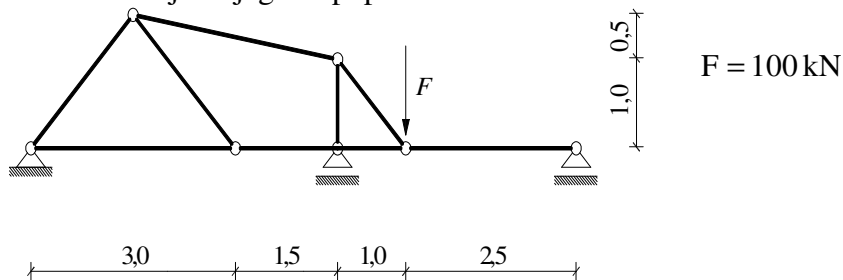
1. (20) Odredite  $\alpha$  tako da bude  $|\min M| = \max M$ .



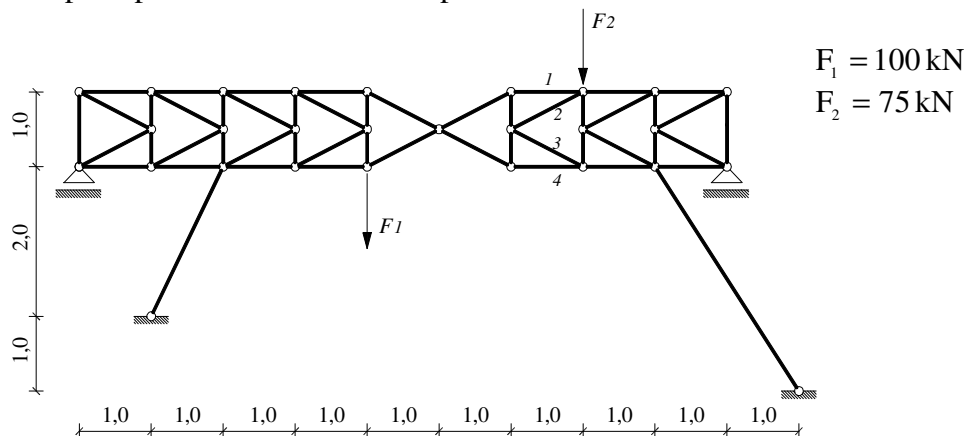
2. (30) Grafičkim postupkom odredite sile u presjecima 1-1 i 2-2.



3. (25) Superpozicijskim postupkom nacrtajte dijagram momenata savijanja. Primjenom diferencijalnog odnosa nacrtajte dijagram poprečnih sila.

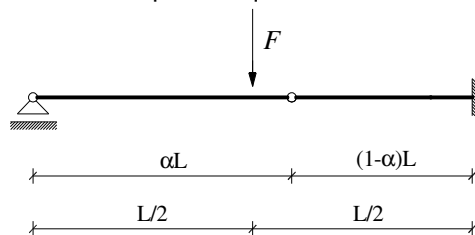


4. (25) Ritterovim postupkom odredite sile u štapovima 1-4.

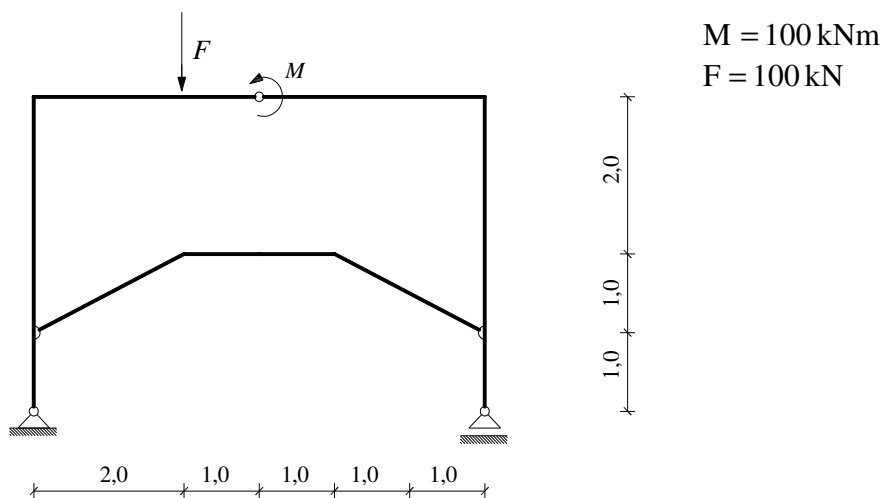


## GS 1. - 1. kolokvij (B) – (2011./2012.)

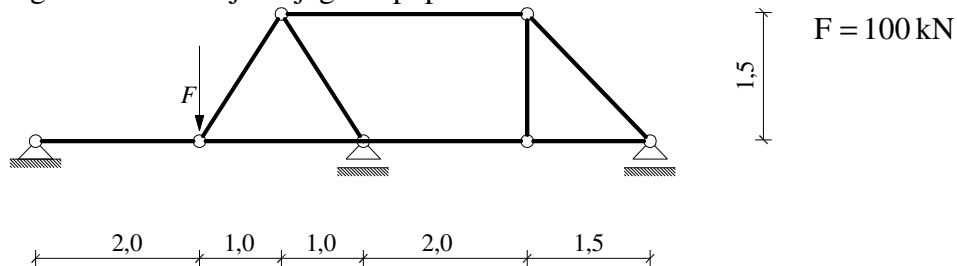
1. (20) Odredite  $\alpha$  tako da bude  $|\min M| = \max M$ .



2. (30) Nacrtajte dijagram momenta savijanja.



3. (25) Superpozicijskim postupkom nacrtajte dijagram momenta savijanja. Primjenom diferencijalnog odnosa nacrtajte dijagram poprečnih sila.



4. (25) Culmannovim postupkom odredite sile u štapovima 1-4.

